

# Eurofox provides crowning glory for the crowne plaza



Eurofox Engineering has contributed to the creation of the latest Crowne Plaza Hotel by providing its innovative cladding support system. The system has provided the support for the hotel's crowning glory – its eye catching, decorative façade cladding.

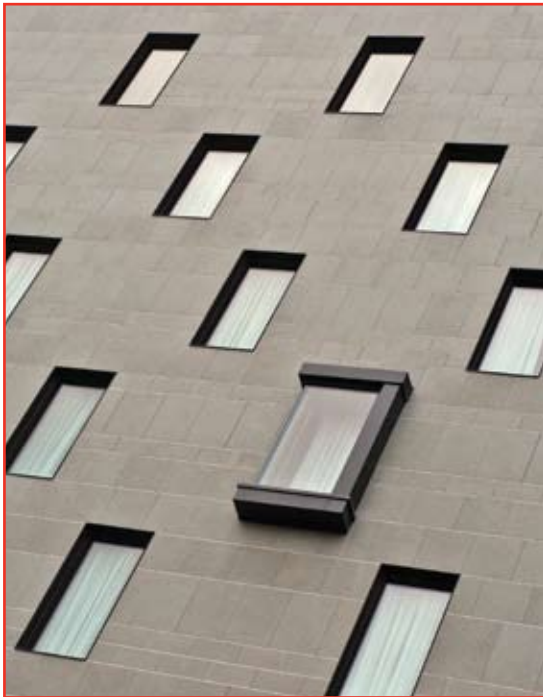
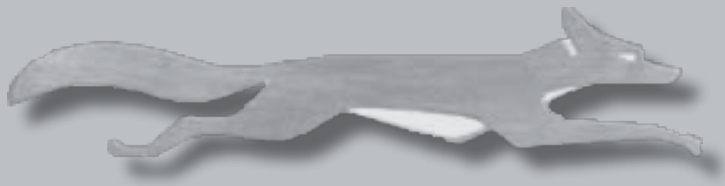
A versatile, robust, yet simple to install The hotel, Manchester's first bespoke Crowne Plaza Hotel has been designed by architects Leach Rhodes Walker and built

by Carillion. Designed around a triangular plan form which creates a unique internal arrangement, the architects wanted to create a contrast between the two main façades. To achieve this they specified basalt stone effect cladding on its southern façade and decorative glass on its northern façade. The colours of the cladding and the glass, which match the hotel's interior, have created a striking building that creates a visual impact on the city's skyline.



Project: Crowne Plaza Hotel  
Location: Manchester  
Architect: Leach Rhodes Walker  
Product: Macfox vertical cladding bracket & rail system





To hold the basalt stone effect cladding securely in place, Eurofox's rainscreen cladding support system was chosen. Working with specialist envelope contractor, Red Architectural, Eurofox supplied its Macfox helping hand brackets and vertical rail system. This provided an easy way of fixing the James and Taylor Carea Tile System to the structure to create the building's impressive façade.

The Macfox system is highly versatile and has been designed to comprise a series of standard 'off the shelf' components (standoffs / cladding zones from 40 to 340 mm can be realised) – Not only does this approach help to provide an easy method of installation but it also ensures immediate availability of products.

Each Macfox bracket is punched to allow for fixing to the building substrate. They are also holed and slotted to allow for dead load and dynamic wind load. The Eurofox bracket allows for complete alignment and lining and leveling adjustment.

Eurofox systems are made of aluminium and comply with BS EN 755 as well as the common European regulations for hung ventilated façades. With the hotel being orientated and designed to maximise energy efficiency and meet stringent sustainability criteria, the use of Eurofox's system reflected the architect's desire for low environmental materials. Being manufactured from aluminum means the brackets are easy to recycle when the building comes to the end of its life and their manufacture needs only 5% of the energy required for primary production.

Crowne Plaza is an international brand with hotels all over the world and the new hotel marks a return to Manchester following a 4 year absence from the city. Now fully open, the 4\* hotel features 228 bedrooms and encapsulates the vibe, heart and soul of Manchester from the inside out.



#### **EUROFOX Engineering LTD**

Unit 10 Blenheim Court  
Brownfields – Welwyn Garden City  
HERTS AL7 1AD

Tel: +44 (0)1707 333 396

Fax: +44 (0)1707 333 343

E-Mail: [info@eurofoxengineering.com](mailto:info@eurofoxengineering.com)

[www.eurofoxengineering.com](http://www.eurofoxengineering.com)

